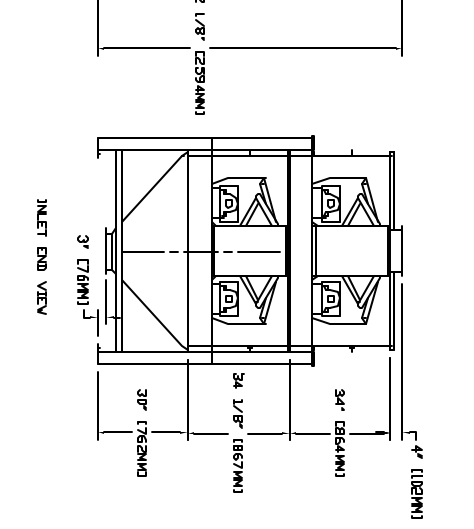
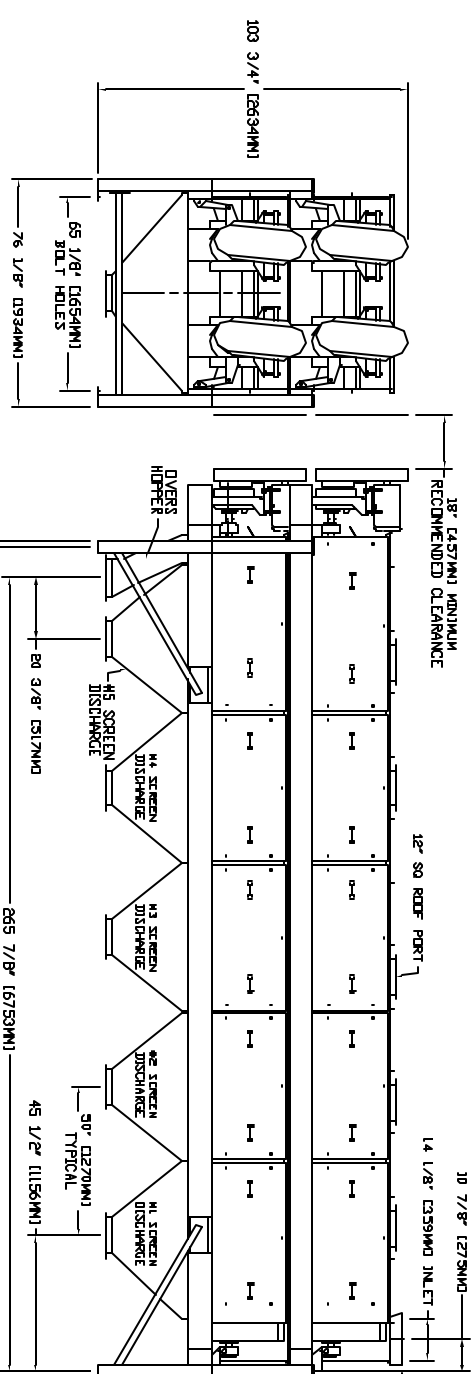
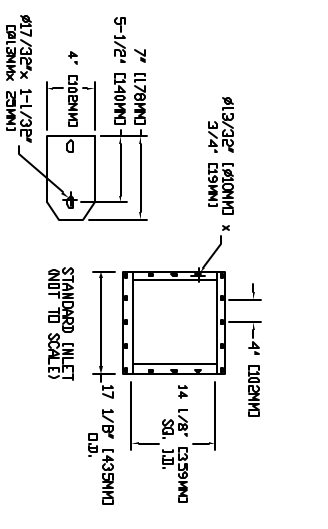
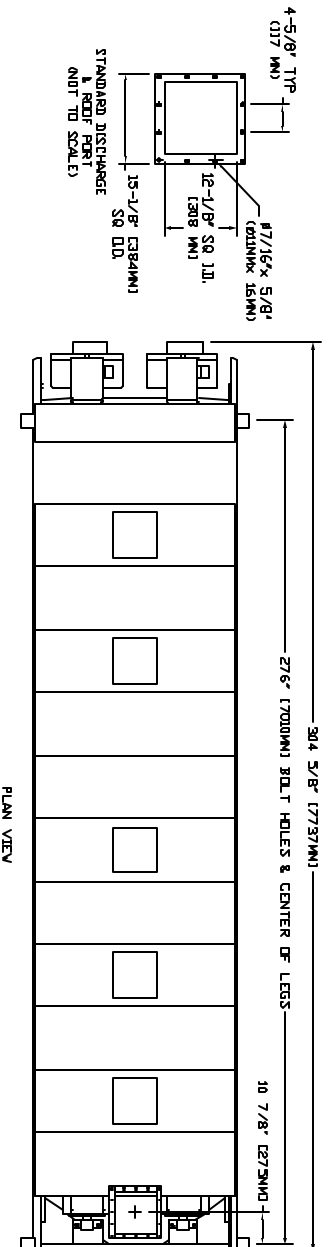


Rev#	Revision date	Date	Name	Checker
1	UPDATED DRIVE	11-14-2015	RDW	
2				
3				
4				



- NOTES**
- STANDARD CENTER DRAW HOPPERS & LEGS SHOWN. OTHER LEGS & HOPPERS ARE AVAILABLE ACCORDING TO CUSTOMER NEEDS. SEE DRAW HOPPERS ARE OPTIONAL.
 - DIMENSIONS SUBJECT TO CHANGE.

APPROVAL SIGNATURES:

CUSTOMER: _____

CONTRACTOR: _____

NOTE: This document is submitted for consideration only. Not for copy or for competitive purposes. This document and all information therein remain the property of EBM Inc. 1114, Shiloh Road, Norfolk, NE 68701. All rights of design or invention are reserved.

www.gentleroll.com
www.ebmmanufacturing.com
EBM MANUFACTURING, INC.
 NORFOLK, NE 68701

Drawn by: RDW 18-26-2016
 Checked by: RAZ 19-03-2016
 Model: 24D2-5-HB STANDARD INLET
 Drawing No: 24D2-5-HB

Printed: Dec 5, 2016
 Scale: 1/1"=1'

FILE F:\EBM\NFS\CAD\GENTLE\Reference CAD\24D2-5-HB.dwg